



**iNTEGRAL**

**FLOW EQUIPMENT**

**Product Catalogue**

**2022**

Red Deer, AB | 403.348.8958

Grande Prairie, AB | 587.771.1624

Minot, ND | 701.213.4188

# Table of Contents



About IFE	2
Plug Valves	3
Plug Valve Repair Kits	4
Choke Valves	5
Choke Valve Trim	6
Ball Valves	7
Check Valves	7
Manifold Systems	8
Debris Catcher Manifolds	9
Fittings	10
Crossovers	10
Blanking Caps & Unions	11
Flange Adaptors	11
Flowline	12
Skids & Fabricated Parts	13
Beans Box	14
Lubricants & Sealants	15
Grease Guns	16
Needle Valves	17
Threaded Ball Valves	18

## Company Profile

Integral Flow Equipment is a manufacturer of high and low pressure valves, fittings, manifold systems and unionized pipe. With our head office and manufacturing facility based in Red Deer Alberta Canada, we operate under a customer and quality first philosophy, which underpins our daily interactions with our customers and manufacturing partners.

## Committed to Quality

Quality is critical to our mission success, and we treat it that way throughout our entire design, engineering and manufacturing process. In accordance with API Q1, we have a detailed material specification and heat lot tracing process. Every piece that ships from our factory undergoes rigorous inspection / testing and is stamped and banded with a unique serial number for asset tracking and traceability.

## Our Products

Our products are used throughout the oil and gas industry, but our target market is flow control - specializing in flowback equipment. We understand testing, and we appreciate its challenges. Substantial experience in the manufacturing of pressure equipment and use of these products in the field allow us to deliver the high-quality equipment and the support you and your operations deserve.

## *Our Commitment*

*A primary goal of Integral Flow Equipment Inc. is to achieve the highest standards of quality in all processes without compromise. Our objective is to continually improve our company performance, while offering our customers a safe, cost effective and professional service.*

# Plug Valves



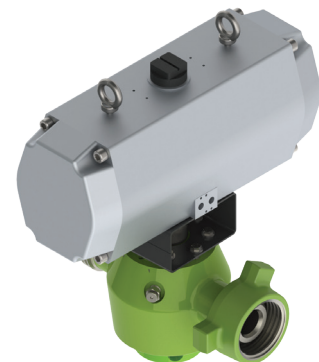
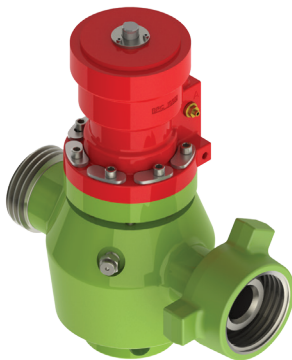
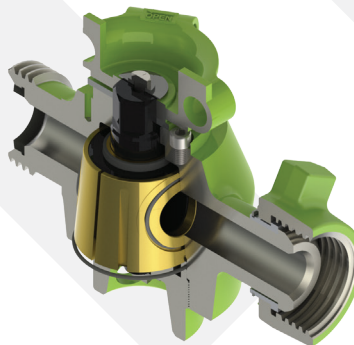
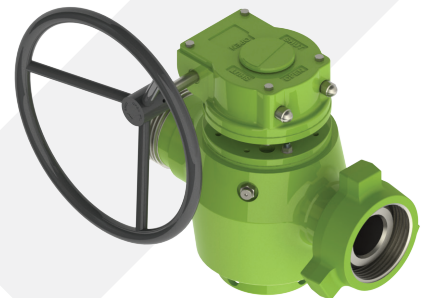
IFE designs and manufactures plug valves for a broad range of applications within the oil and gas industry, from drilling to completion, stimulation, flowback and production. Constructed from closed-die forged high quality alloy steel and optimized for weight and erosion resistance, IFE plug valves are interchangeable with any comparable valve manufactured by Anson, TSI, MSI, Kemper, RDI, SPM, and FMC among many others.

Direct OEM replacement valves that fit in nearly any competitor manifold or application and are compatible with universal, cost-effective low torque repair kits that are widely available.

- 2" x 1", 2" and 3" sizes
- 1502, 602 and 206 hammer union connections
- Sour (NACE) and Standard Service
- Low Torque and Top Entry designs available

IFE plug valves are available with a variety of actuation options to suit your specific application. We also offer customizable appearance and traceability features:

- Lever operated, gear operated, hydraulic, pneumatic & electric actuation available
- Individual serial numbers are stamped and banded on each valve
- Custom paint and banding available



\*Please note: IFE is neither affiliated with, nor approved by any of the aforementioned companies.



# Plug Valve Repair Kits



IFE is your plug valve repair kit specialist. Our kits interchange with most any comparable product manufactured by Anson, TSI, MSI, Kemper, RDI, SMI, SPM, and FMC among many others. We offer a wide variety of repair kits in both Sour Service and Standard Service options including:

- Top Entry
- Low Torque
- Full Port
- Reduced Port / Reg Port

We know most company's assets include multiple brands and styles of valves. IFE is your single source for all your repair kit needs, offering a broad range of solutions for your valve maintenance requirements.

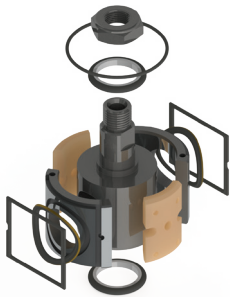
## 2" 1502 Repair Kits

Valve Brand	Model / Style	Service Type	IFE REPAIR KIT P/N							
			03-PVL-23001-45	03-PVL-23002-41	03-PVL-23001-43	03-PVT-23001-20	03-PVT-23000-60	03-PVT-23000-50		
Anson	Premier / Low Torque	H2S				✓				
FMC	DR / Top Entry	STD								✓
	ULT / Top Entry	STD							✓	
Kemper	Low Torque	STD		✓						
		H2S	✓							
MSI	Low Torque	STD		✓						
		H2S	✓							
RDI	Top Entry	STD						✓		
		H2S						✓		
SMI / S3	Low Torque	STD		✓						
		H2S	✓							
SPM	Legacy / Top Entry	STD								✓
TSI	Low Torque	STD		✓						
		H2S	✓							

## 3" 1502 Repair Kits

Valve Brand	Model / Style	Service Type	IFE REPAIR KIT P/N							
			03-PVL-33001-45	03-PVL-33002-41	03-PVL-33001-43	03-PVT-30000-60	03-PVT-30000-20	03-PVT-30000-50		
Anson	Premier / Low Torque	H2S				✓				
FMC	ULT / Top Entry	STD							✓	
		STD				✓				
Kemper	Low Torque	STD								
		H2S	✓							
MSI	Low Torque	STD				✓				
		H2S	✓							
RDI	Top Entry	STD								✓
		H2S								✓
SMI / S3	Low Torque	STD				✓				
		H2S	✓							
SPM	Legacy / Top Entry	STD								✓
TSI	Low Torque	STD				✓				
		H2S	✓							

- Top Entry repair kits available for 2" 602 plug valves (fit Anson and RDI)
- Low Torque and Top Entry repair kits available for most 1" 1502 and 2" x 1" 1502 plug valves



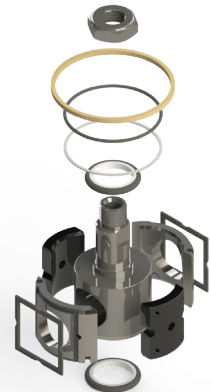
2" Top Entry Repair Kit Fits FMC



2" Top Entry Repair Kit Fits RDI



2" Full Port Low Torque Repair Kit



2" Top Entry Repair Kit Fits SPM

\*Please note: IFE is neither affiliated with, nor approved by any of the aforementioned valve brands.

# Choke Valves

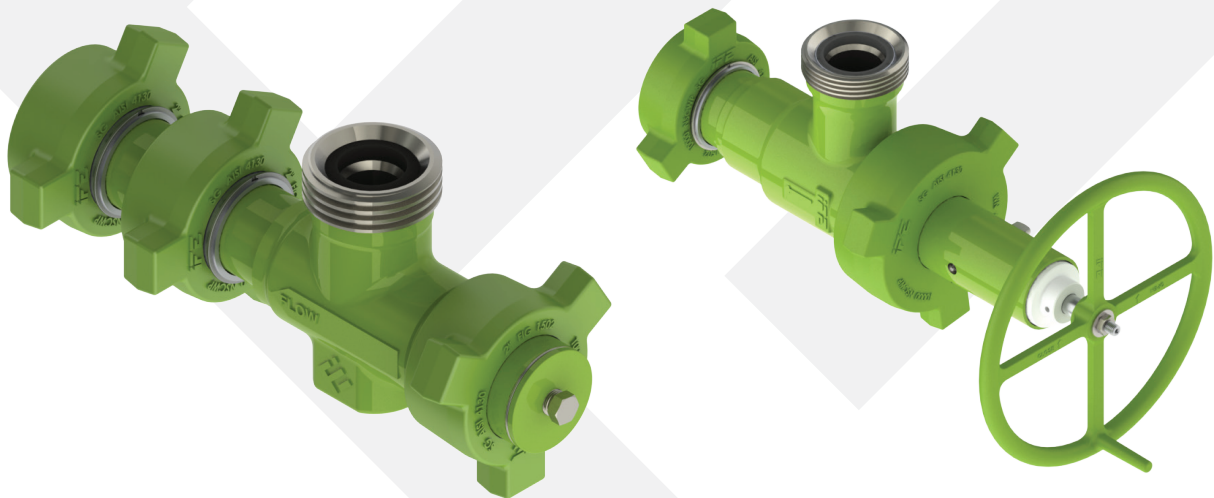


IFE offers adjustable and positive chokes in both Sour (NACE) and Standard Service options. We strive to be your single source supplier for all your replacement parts, offering choke valves in several common dimensions to fit nearly any brand of manifold or application.

IFE adjustable chokes use the time-tested needle and seat design, offering dependable flow control and unparalleled flexibility. Our adjustable chokes are available in 2" and 3" sizes, with optional 206, 602 or 1502 connections. We have a direct replacement for most brands of choke valves / manifolds.

All of our choke valves are available with or without taps and incorporate common FC140 / N60 and H2 trim styles. Closed-die forgings and high-quality alloy steel construction increases service life while improving accuracy and reducing maintenance requirements. Adjustable and positive choke valves are available in a variety of dimensions including:

- 2" 602 - 6" x 6" pattern
- 2" 1502 - 6" x 6" or 5" x 7" patterns
- 3" 1502 - 8" x 8", 8.13" and 8.43" patterns
- 3" 206 - 8" x 8" pattern
- Other patterns available upon request



\*Please note: IFE is neither affiliated with, nor approved by any of the aforementioned companies.

# Choke Valve Trim



IFE offers choke trim at competitive prices. Available with carbide tungsten liners and tips (full lined or partial lined options), ceramic or solid alloy steel.

## Positive / Fixed Bean Chokes

- 4/64 through 64/64 N60 beans
- 4/64 through 128/64 H2 beans
- Ceramic, Patial & Full Lined Tungsten Carbide options

## Adjustable Choke Stems

- 2" 602 Adjustable Choke Stems in  $\frac{3}{4}$ " and 1"
- 2" 1502 Adjustable Choke Stems in 1"
- 3" 602 Adjustable Choke Stems in 1" and 2"
- 3" 1502 Adjustable Choke Stems in 1" and 2"
- N60 and H2 designs available

## Adjustable Choke Seats

- 2" 602 Adjustable Choke Seats in  $\frac{3}{4}$ " and 1"
- 2" 1502 Adjustable Choke Seats in  $\frac{3}{4}$ " and 1"
- 3" 602 Adjustable Choke Seats in 1" and 2"
- 3" 1502 Adjustable Choke Seats in 1" and 2"
- N60 and H2 designs available

## Bean and Seat Adaptors

- 2" MAX H2 x 1" MAX H2 Adaptors
- 2" MAX H2 x 1" OCT Adaptors
- Available in 4130 Carbon Steel and Stainless Steel

## Bean & Seat Wrenches

- 1" MAX N60 Bean / Seat Wrenches
- 2" MAX H2 Bean / Seat Wrenches
- Combination H2 / N60 Wrenches



\*Please note: IFE is neither affiliated with, nor approved by any of the aforementioned companies.

## Ball Valves



IFE offers floating ball valves with integral / detachable union end connections. We supply various end to end lengths in Figure 206, 602 and 1502 configurations, with options in 2" and 3" sizes.

Our integral ball valves are available with a variety of seat materials including Polymer, Teflon and PEEK, and have user friendly features including:

- Greaseable
- Blowout proof stems
- Compact
- Lightweight



## Check Valves

IFE offers check valves in both swing check and dart check designs. Available in 2" and 3" sizes, with either 602 or 1502 connections. Our compact design is much lighter than other check valves on the market and comes with a convenient integrated handle for easy transportation.

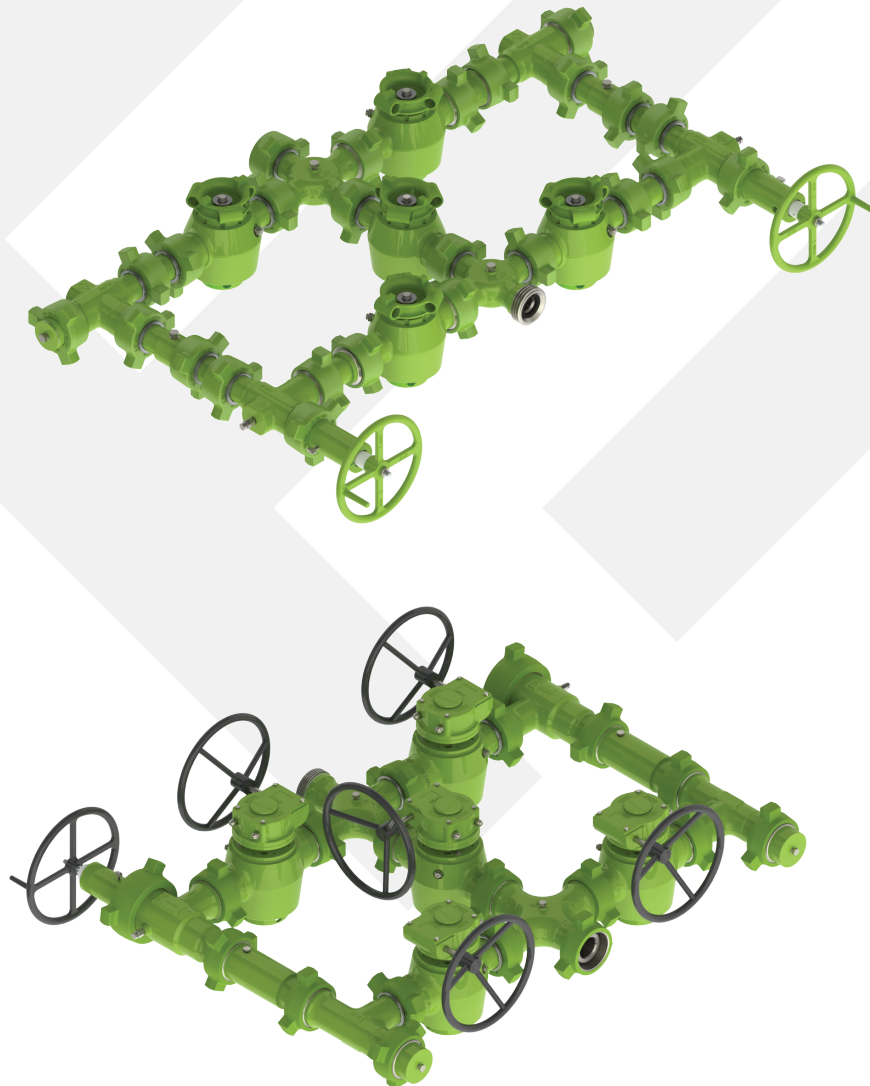
Available in both Sour Service and Standard Service, we have a check valve to suit your requirements for both pumping and flow back. Our swing check valves are full bore valves, matching the ID of integral pipe and are easily disassembled with socket head cap screws, eliminating the need for cumbersome chain wrenches.



\*Please note: IFE is neither affiliated with, nor approved by any of the aforementioned companies.

IFE offers a broad range of manifold systems for many applications in both Sour Service (NACE) and Standard Service options. Available in 2" and 3" sizes, with either Figure 602 and 1502 connections. Our manifold components are constructed from high grade materials and are designed for erosion resistance, accuracy and durability. Interchangeable with many competitor brands, we can supply complete manifolds or replacement parts for nearly any manifold in your fleet.

- Single and dual stage choke manifolds
- Individual serial numbers on all components
- Lever, gear operated, hydraulic, pneumatic or electric actuation available
- Numerous skid / frame options available
- Gantry and jib cranes can be incorporated to assist operators
- Custom manifolds and skids available



\*Please note: IFE is neither affiliated with, nor approved by any of the aforementioned companies.

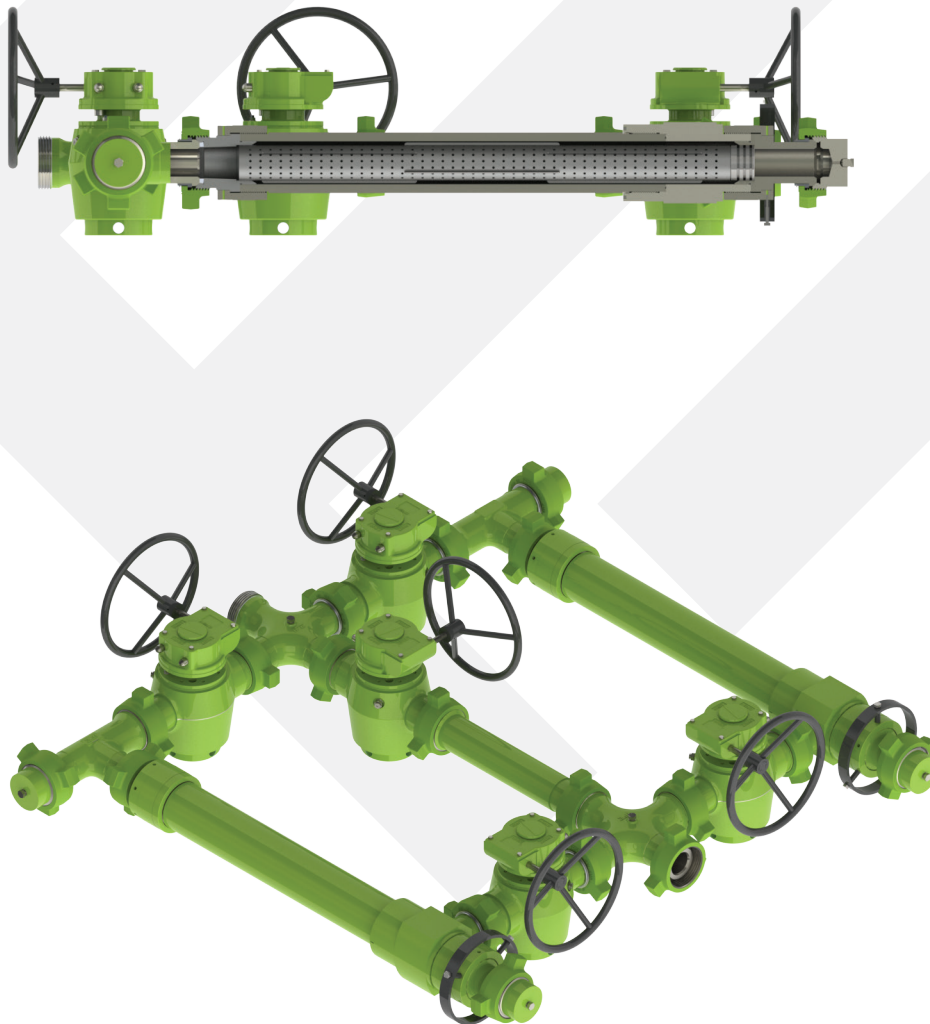


# Debris Catcher Manifolds



IFE debris catchers are designed to capture and remove solid debris from flow back fluids to prevent plugging of chokes, protect your downstream equipment and improve safety. Dual barrels allow for uninterrupted debris catching without shutting down to clean out screens.

- Custom layouts / configurations available
- 10,000 PSI Sour (NACE) and 15,000 PSI Standard Service options
- Screens available for various applications / types of debris
- Numerous skid / frame options available



\*Please note: IFE is neither affiliated with, nor approved by any of the aforementioned companies.

## Fittings



IFE offers integral fittings with a wide variety of sizes, dimensions and configurations to suit your specific requirements. Available in Standard and Sour Service with 2" 602, 2" 1502 and 3" 1502 options, our fittings are designed for erosion resistance and optimized for weight reduction. We can supply fittings to match any competitor dimensions and offer custom manufacturing, paint and banding options.



## Crossovers

IFE offers crossovers in almost all oilfield connections. Sizes range from 1" through 4" and are available in figure 206 through 2202 with Sour (NACE) and Standard Service options. IFE crossovers are manufactured from high quality alloy steel and optimized for weight.

- NPT thread x hammer union and EUE thread x hammer union crossover also available
- Custom manufacturing / dimensions available
- Custom paint and banding options
- Large inventory in stock



\*Please note: IFE is neither affiliated with, nor approved by any of the aforementioned companies.

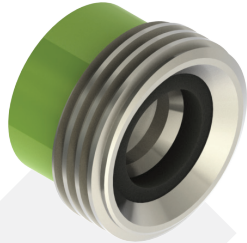
# Blanking Caps & Unions



## Blanking Caps

IFE offers female and male blanking caps with several tapped or solid (no tap) options to choose from. Offered in 1", 2", 3" and 4" blanking caps and with 206, 602, 1002, 1502 and 2202 connections.

- Constructed from high quality alloy steel
- No Tap, NPT and Autoclave port options available
- Custom paint available



## Unions

IFE offers butt weld hammer unions in 2", 3" and 4" sizes and Figures 206 through 2202. Unions are available with detachable or non-detachable wing nuts, rated for either Sour (NACE) or Standard Service.

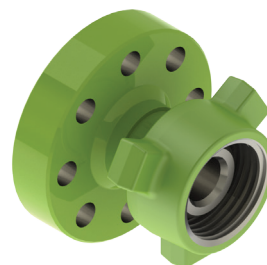
- Heat numbers clearly marked; MTRs for all
- Pipe Schedules: STD through XXH
- Custom paint available

IFE also offers NPT threaded hammer unions in Figures 206, 602, and 1502, available in sizes ranging from 1" through 4".

# Flange Adaptors

IFE offers API 6A and ASME B16.9 flange adaptors, with both RTJ (Ring Type Joint) and RF (Raised Face) configurations available. Our flange adaptors are constructed from closed-die forged high quality alloy steel or solid round billet and are stamped with unique serial numbers.

- Available in a variety of material classes and temperature classes
- Custom paint and banding available
- Large inventory in stock



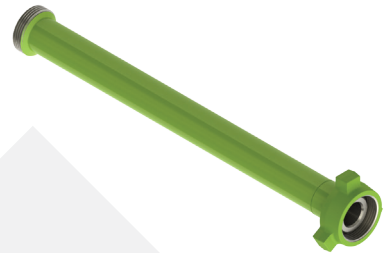
\*Please note: IFE is neither affiliated with, nor approved by any of the aforementioned companies.



IFE offers a wide selection of integral, NPST and welded pipe, pup joints and data headers with hammer union connections for use anywhere temporary pipework is required. Available in 1", 2", 3" and 4" sizes with working pressures up to 15,000 PSI NSCWP.

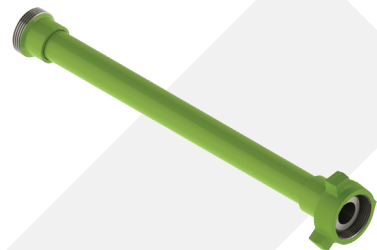
## Integral Flowline

- Constructed from high quality alloy steel
- Sour (NACE) and Standard Service options
- 1FT – 10FT lengths available
- Individual serial number on all
- Custom paint and banding



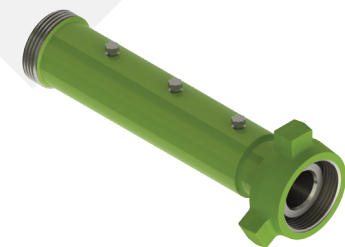
## NPST Flowline

- Non-pressure seal thread construction from seamless tubes
- Sour (NACE) and Standard Service options
- 2FT – 10FT lengths available
- Individual serial number on all
- Custom paint and banding



## Integral Data Headers

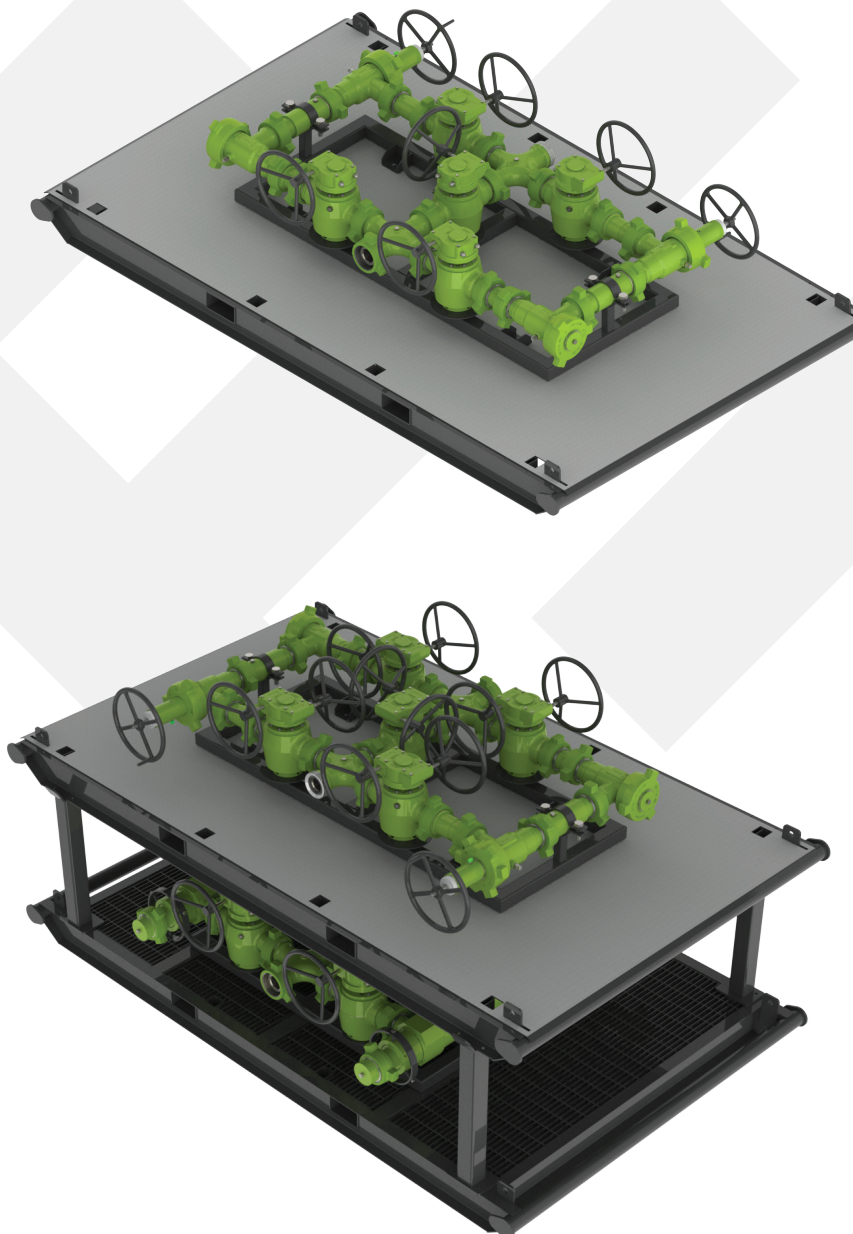
- Sour (NACE) and Standard Service options
- NPT or Autoclave ports available
- Custom lengths / configurations available
- Individual serial number on all
- Custom paint and banding



\*Please note: IFE is neither affiliated with, nor approved by any of the aforementioned companies.

IFE offers numerous styles of skids and frames for mounting manifolds and debris catchers. Our field proven designs are available for quick delivery from stock, or you can custom order for specific applications.

- Checker plate or engineered “containment style” options
- Integrated pockets for hand-winch cranes
- Stackable skid design available
- Custom paint and appearance options



\*Please note: IFE is neither affiliated with, nor approved by any of the aforementioned companies.

# Beanz Box

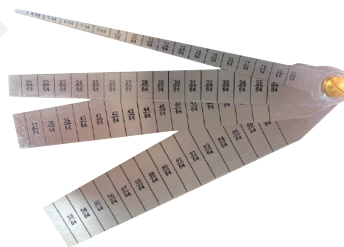


IFE's new Beanz Box provides a compact and durable storage / transportation solution for your flow bean chokes. Foam inserts hold the bean chokes isolated from each other and firmly in place, eliminating the potential for damaged threads and making choke changes easier and more efficient. Each Beanz Box also comes with a stainless-steel orifice "quick measure tool" for those hard to read bean chokes.

- Steel construction
- Rubber, waterproof seal
- Stackable
- Protective inserts for flow beans
- Orifice "Quick Measure Tool" included



*\* Beans not included*



*Includes quick measure tool!*

\*Please note: IFE is neither affiliated with, nor approved by any of the aforementioned companies.

IFE offers a broad range of lubricants and sealants to keep your equipment running smoothly. We have a product for nearly any industrial lubrication / sealing application, including all types of valves and dry flow / orifice meters. Our high quality synthetic and hydrocarbon resistant products will extend the life of your assets while reducing down time and minimizing repair costs.



## Lubricants

- Many options to choose from, including IFE's 5501 plug valve grease which provides the ultimate protection for plug valves in flowback operations
- All our lubricants are available in many delivery formats including:
  - a) Small Sticks (B, C, D, & G sticks)
  - b) Large Sticks (J & K sticks)
  - c) Cartridge
  - d) Bulk (From 10 lb cans to 400 lb drums)

## Sealants

- Products for numerous applications
- Made from high quality synthetic oils and additives
- Chemical resistant

## Injectable Packing

- Engineered using completely synthetic base materials
- High performance formula
- Preserves and maintains equipment

## Specialty

- Several products available for specialty applications including:
  - a) Anti-Seize Protective Coating Spray
  - b) Dry Moly Lube Spray
  - c) Super Fast Acting Rust & Oxide Penetrant Spray

\*Please note: IFE is neither affiliated with, nor approved by any of the aforementioned companies.

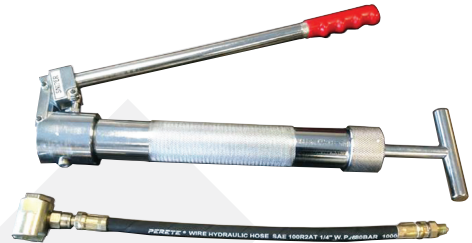
# Grease Guns



IFE offers a wide variety of grease guns and lubrication equipment to keep your valves operating smoothly and minimize repair costs. The SNIPER™ line of lubrication equipment are heavy duty, industrial grade and precision made offering superior performance with cleaners, packing, sealants and viscous lubricants. All our grease guns are suitable for lubrication pressures up to 10,000 PSI.

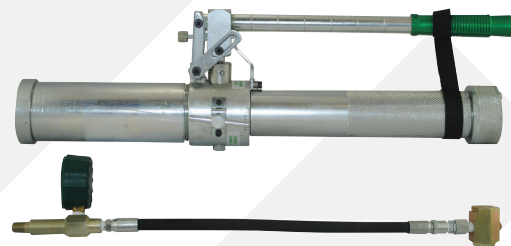
## Screw-Prime Hand Pump Grease Gun

- Cost effective
- Lightweight & durable
- Virtually maintenance free
- Corrosion resistant
- Accepts “J” and “K” sticks



## Hydraulic Hand Pump Grease Gun

- Easy operation
- Rugged construction
- Compact design
- Customizable
- Accepts “J” sticks



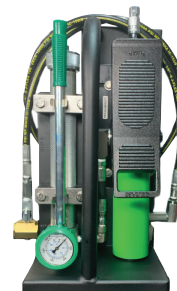
## Hydraulic Foot Pump Grease Gun (Manual)

- Rugged and light weight
- High volume grease discharge
- Easy operation
- Deliver 12 oz. in 30-60 seconds
- Accepts “J” and “K” sticks



## Air / Hydraulic Driven Grease Gun

- For serious applications
- High volume, fast grease discharge rate
- Foot controlled
- Compatible with a wide range of lubricants
- Accepts “J” and “K” sticks



\*Please note: IFE is neither affiliated with, nor approved by any of the aforementioned companies.



# Needle Valves



Integral Flow Equipment offers an array of needle valves to our customers in sizes ranging from ¼” to 1”. With NPT and autoclave connection options, we supply needle valves for pressure applications up to 30,000 PSI.

Our Straight and Angled MxF Needle Valves are CRN REGISTERED (#0C17585.2) & certified to 10,000 PSI for sizes ½” NPT and smaller.

## Products Available



**Straight MxF  
(10,000 PSI)**



**Angled (90°) MxF  
(10,000 PSI)**



**Autoclave Needle Valve  
(30,000PSI)**

\*Please note: IFE is neither affiliated with, nor approved by any of the aforementioned companies.

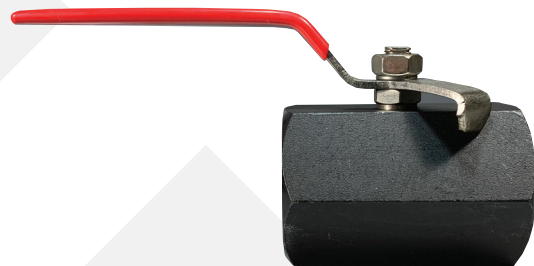
# Threaded Ball Valves



IFE offers threaded ball valves to suit your needs. Designed with safety and function in mind, our ball valves are outfitted with features such as blowout prevention systems and locking pins.

## G-104 Single Piece A105/108 Hex Body

- 2,000 PSI WOG
- Threaded ends
- Reduced port
- Temperature range: -60°F to 450°F (-51°C to 232°C)
- Meets NACE MR-0175



## G-205 Two Piece A216WCB Body

- 5,000 PSI WOG
- Threaded ends
- Reduced port
- Temperature range: -60°F to 450°F (-51°C to 232°C)
- Meets NACE MR-0175



## G-303 Two Piece CS A216WCB

- 3,000 PSI WOG
- Threaded ends
- Reduced Port Option
- Temperature range: 0° F to 176°F (0°C to 80°C)
- Full Port Option
- Meets NACE MR-0175



\*Please note: IFE is neither affiliated with, nor approved by any of the aforementioned companies.



# **i**NTTEGRAL

**FLOW EQUIPMENT**

## **Red Deer, Alberta**

*Phone: 403.348.8958  
Unit 100, 310 Burnt Park Way  
T4S 2L4*

## **Grande Prairie, Alberta**

*Phone: 587.771.1624  
Unit 102, 9638 115 Street  
T8V 5W2*

## **Minot, North Dakota**

*Phone: 701.213.4188  
Bay 5, 5220 North Broadway  
58703*

**[sales@integralflowinc.com](mailto:sales@integralflowinc.com)**